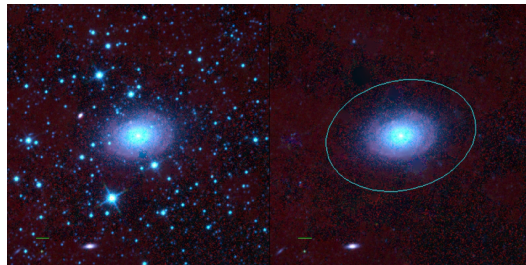
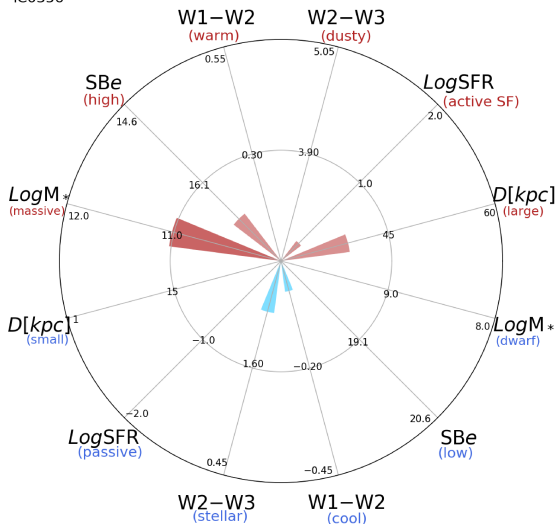


IC0356



IC0356



IC0356 (Sb)

$\alpha, \delta = 61.9451 \ 69.8125$

W1 [mJy] = 1550.252

W1-W2 [mag] = -0.020

W2-W3 [mag] = 2.205

S_{Beff} [mag/asec²] = 16.792

specz = 0.00273

d [Mpc] = 11.75

Mw1 [mag] = -24.60

D [kpc] = 39.4

Log M* [M_{\odot}] = 11.017

SFR [M_{\odot}/yr] = 1.69