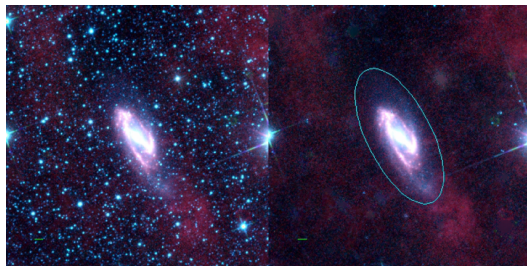
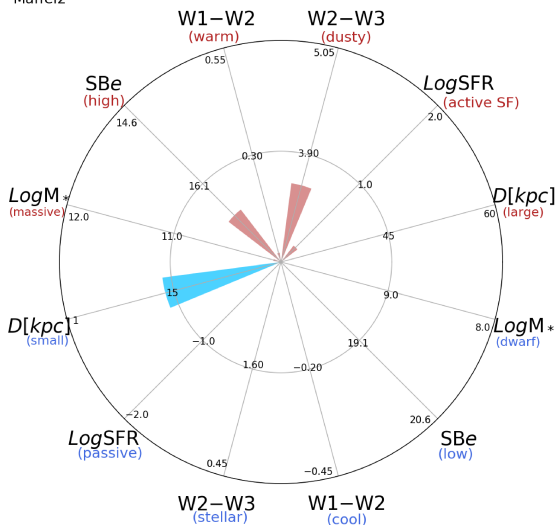


Maffei2



Maffei2



MAFFEI2 (Sbc)

$\alpha, \delta = 40.4793 \ 59.6042$

W1 [mJy] = 5278.599

W1-W2 [mag] = 0.071

W2-W3 [mag] = 3.574

S_{Beff} [mag/asec²] = 16.707

specz = 0.00065

d [Mpc] = 2.79

Mw1 [mag] = -22.81

D [kpc] = 13.8

Log M* [M_\odot] = 10.070

SFR [M_\odot /yr] = 1.53