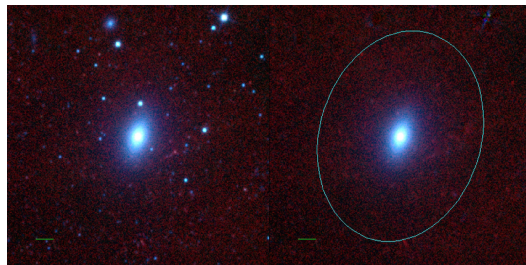
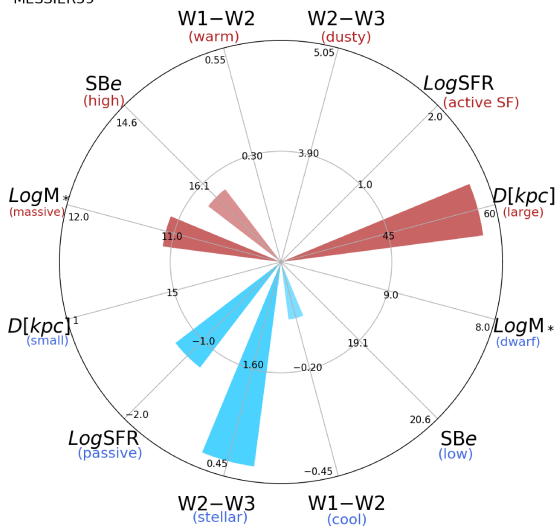


## MESSIER59



MESSIER59



MESSIER\_059 (E)

$\alpha, \delta = 190.5094 \ 11.6470$

W1 [mJy] = 775.761

W1-W2 [mag] = -0.081

W2-W3 [mag] = 0.610

$SB_{eff}$  [mag/asec<sup>2</sup>] = 16.358

specz = 0.00379

d [Mpc] = 16.32

Mw1 [mag] = -24.56

D [kpc] = 57.6

Log M\* [ $M_\odot$ ] = 11.077

SFR [ $M_\odot/\text{yr}$ ] = 0.063