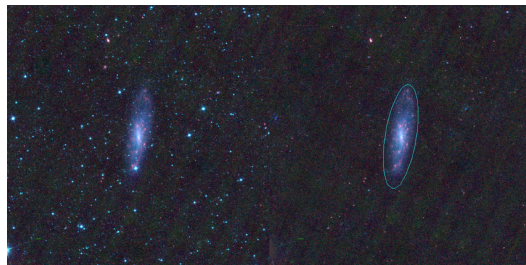
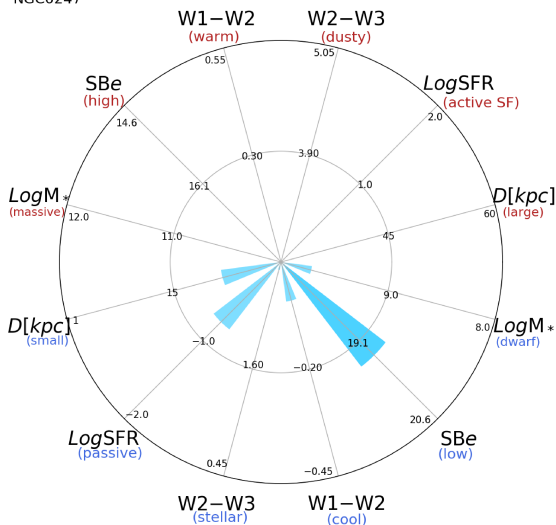


NGC0247



NGC0247



NGC0247 (SABc)

$\alpha, \delta = 11.7853 - 20.7604$

W1 [mJy] = 811.601

W1-W2 [mag] = -0.040

W2-W3 [mag] = 2.668

SB_{eff} [mag/asec²] = 19.385

specz = 0.00080

d [Mpc] = 3.44

Mw1 [mag] = -21.23

D [kpc] = 21.8

Log M* [M_\odot] = 9.718

SFR [M_\odot/yr] = 0.171