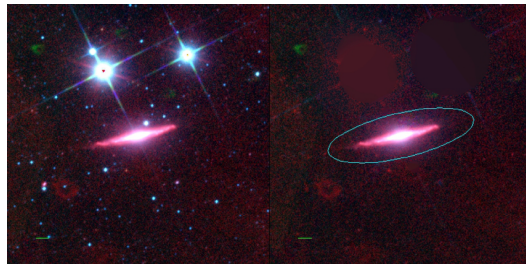
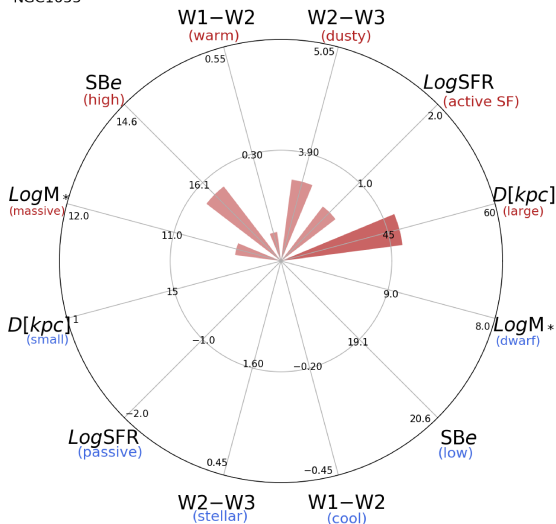


NGC1055



NGC1055



NGC1055 (SBb)

$\alpha, \delta = 40.4383 \ 0.4438$

W1 [mJy] = 596.764

W1-W2 [mag] = 0.116

W2-W3 [mag] = 3.601

$S_{B_{eff}}$ [mag/asec²] = 16.329

specz = 0.00329

d [Mpc] = 14.16

Mw1 [mag] = -23.97

D [kpc] = 46.6

Log M* [M_{\odot}] = 10.418

SFR [M_{\odot}/yr] = 4.18