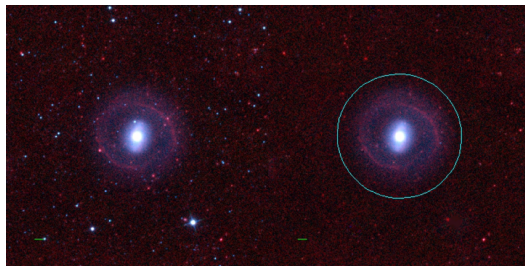
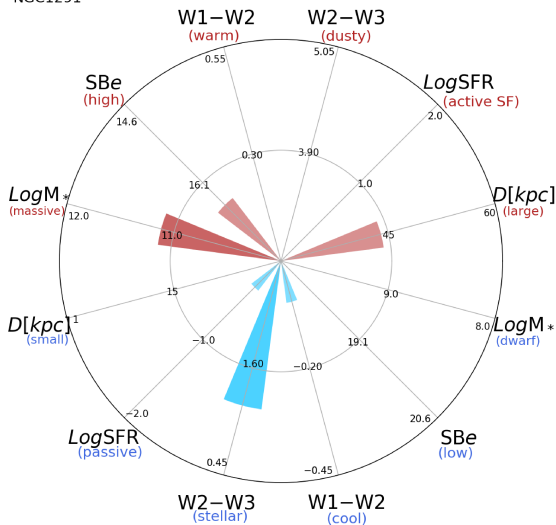


NGC1291



NGC1291



NGC1291 (S0-a)

$\alpha, \delta = 49.3274 -41.1080$

W1 [mJy] = 2113.548

W1-W2 [mag] = -0.045

W2-W3 [mag] = 1.198

S_{Beff} [mag/asec²] = 16.525

specz = 0.00245

d [Mpc] = 10.54

Mw1 [mag] = -24.70

D [kpc] = 44.0

Log M* [M_\odot] = 11.119

SFR [M_\odot/yr] = 0.462