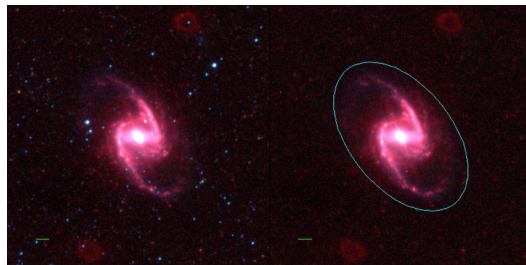
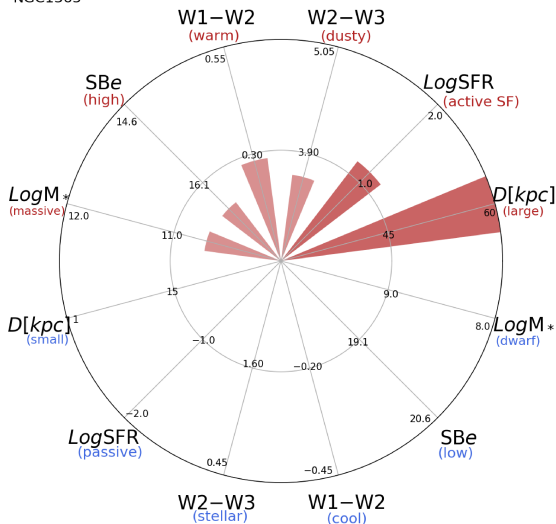


NGC1365



NGC1365



NGC1365 (Sb)

$\alpha, \delta = 53.4014 -36.1405$

W1 [mJy] = 1157.739

W1-W2 [mag] = 0.284

W2-W3 [mag] = 3.652

SBe_{eff} [mag/asec²] = 16.597

specz = 0.00416

d [Mpc] = 17.92

Mw1 [mag] = -25.20

D [kpc] = 67.5

Log M* [M_{\odot}] = 10.697

SFR [M_{\odot}/yr] = 13.61