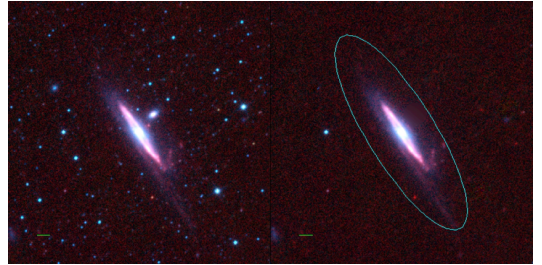
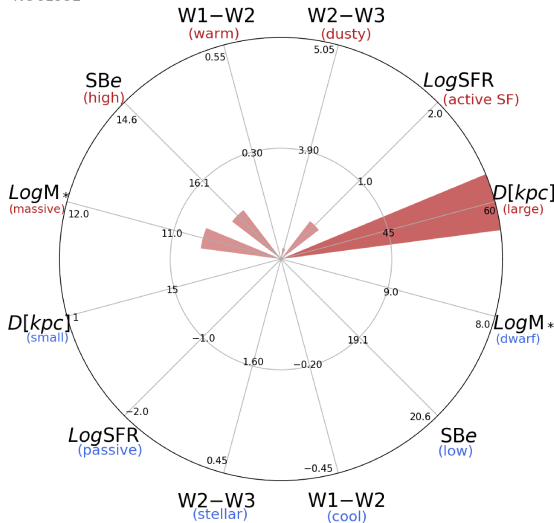


NGC1532



NGC1532



NGC1532 (SBb)

$\alpha, \delta = 63.0181 -32.8742$

W1 [mJy] = 804.662

W1-W2 [mag] = 0.047

W2-W3 [mag] = 2.862

SB_{eff} [mag/asec²] = 16.766

specz = 0.00331

d [Mpc] = 14.25

Mw1 [mag] = -24.31

D [kpc] = 77.7

Log M* [M_{\odot}] = 10.729

SFR [M_{\odot} /yr] = 2.69