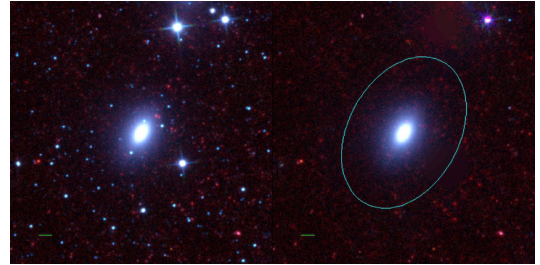
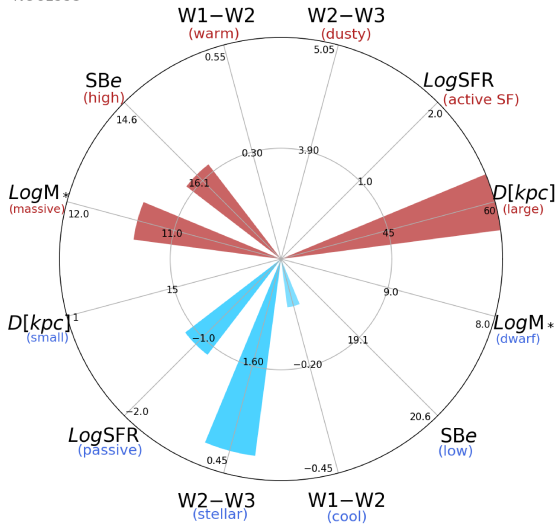


## NGC1553



NGC1553



NGC1553 (S0)

$\alpha, \delta = 64.0436 -55.7800$

W1 [mJy] = 1287.232

W1-W2 [mag] = -0.060

W2-W3 [mag] = 0.690

$S_{Beff}$  [mag/asec<sup>2</sup>] = 15.985

specz = 0.00399

d [Mpc] = 17.18

Mw1 [mag] = -25.22

D [kpc] = 86.3

Log M\* [ $M_{\odot}$ ] = 11.342

SFR [ $M_{\odot}/yr$ ] = 0.081