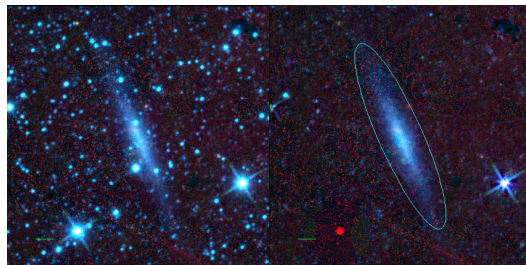
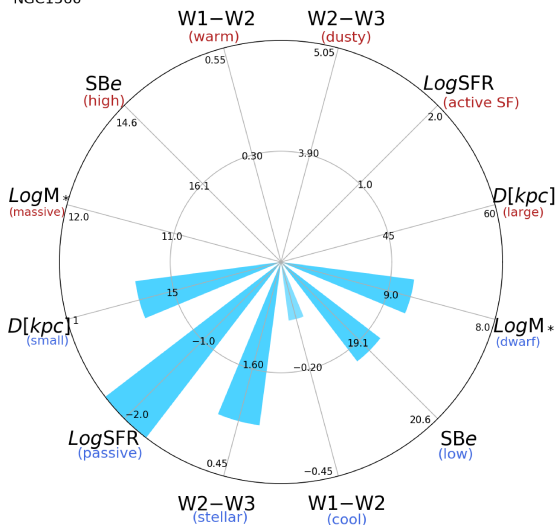


NGC1560



NGC1560



NGC1560 (Scd)

$\alpha, \delta = 68.2055 \ 71.8839$

W1 [mJy] = 117.704

W1-W2 [mag] = -0.083

W2-W3 [mag] = 1.042

S_{Beff} [mag/asec²] = 19.294

specz = 0.00070

d [Mpc] = 3.01

Mw1 [mag] = -18.84

D [kpc] = 10.1

Log M* [M_{\odot}] = 8.789

SFR [M_{\odot}/yr] = 0.003