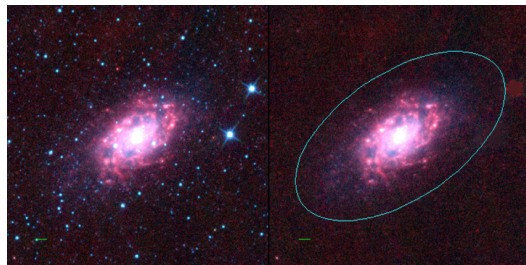
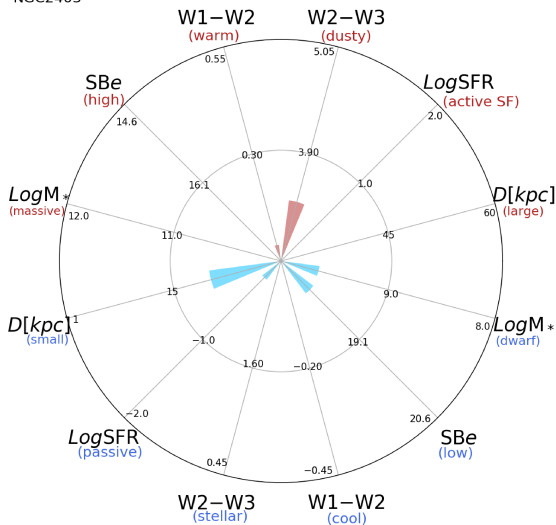


NGC2403



NGC2403



NGC2403 (SABc)

$\alpha, \delta = 114.2088 \ 65.6010$

W1 [mJy] = 1702.509

W1-W2 [mag] = 0.087

W2-W3 [mag] = 3.384

S_{Beff} [mag/asec²] = 18.152

specz = 0.00074

d [Mpc] = 3.18

Mw1 [mag] = -21.86

D [kpc] = 20.2

Log M* [M_\odot] = 9.650

SFR [M_\odot/yr] = 0.614