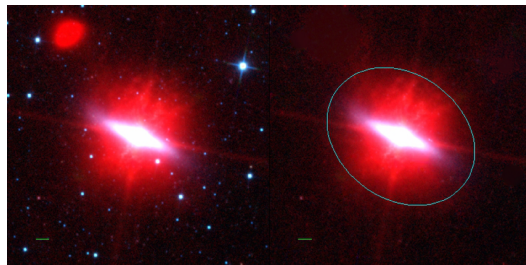
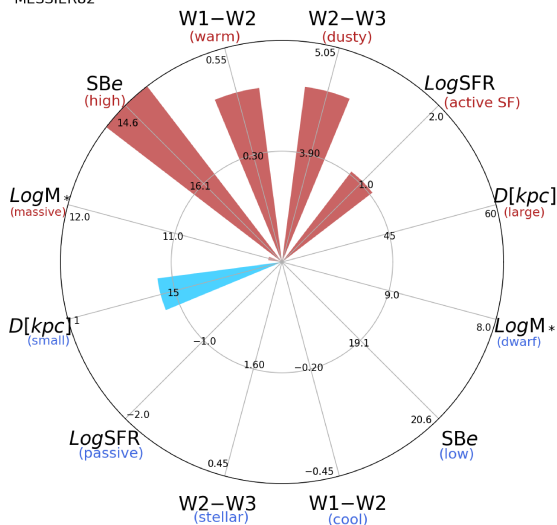


MESSIER82



MESSIER82



NGC3034 (S?)

$\alpha, \delta = 148.9665 \ 69.6798$

W1 [mJy] = 7323.237

W1-W2 [mag] = 0.446

W2-W3 [mag] = 4.583

S_{Beff} [mag/asec²] = 12.755

specz = 0.00086

d [Mpc] = 3.70

Mw1 [mag] = -23.77

D [kpc] = 13.0

Log M* [M_\odot] = 10.127

SFR [M_\odot/yr] = 10.69