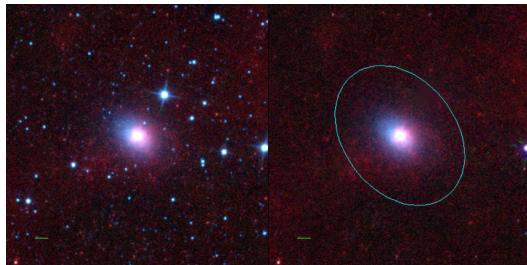
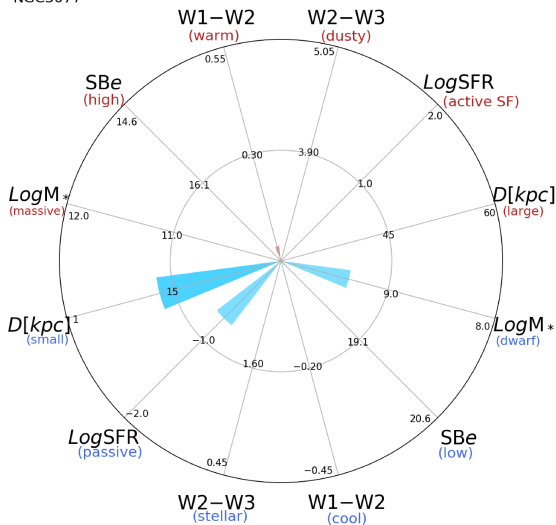


NGC3077



NGC3077



NGC3077 (S?)

$\alpha, \delta = 150.8298 \ 68.7339$

W1 [mJy] = 604.687

W1-W2 [mag] = 0.084

W2-W3 [mag] = 2.708

S_{Beff} [mag/asec²] = 17.676

specz = 0.00089

d [Mpc] = 3.82

Mw1 [mag] = -21.14

D [kpc] = 13.0

Log M* [M_\odot] = 9.367

SFR [M_\odot/yr] = 0.186