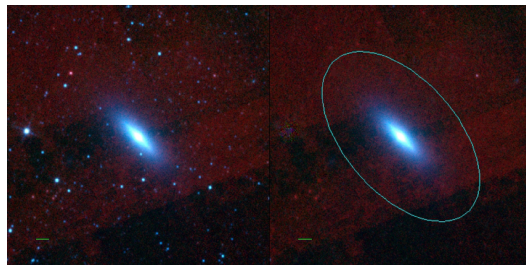
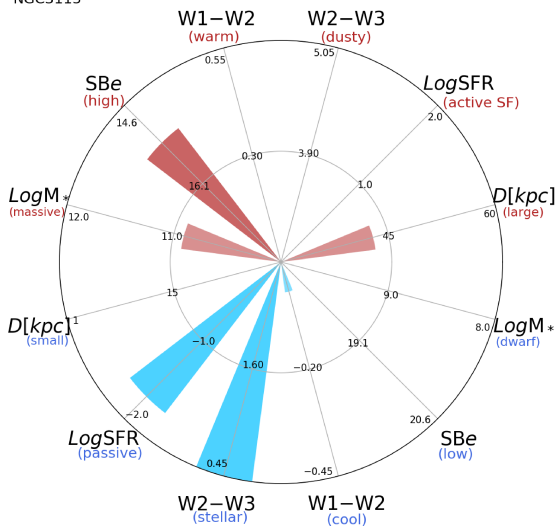


NGC3115



NGC3115



NGC3115 (E-S0)

$\alpha, \delta = 151.3080 -7.7187$

W1 [mJy] = 1806.951

W1-W2 [mag] = -0.019

W2-W3 [mag] = 0.332

SB_{eff} [mag/asec²] = 15.317

specz = 0.00224

d [Mpc] = 9.64

Mw1 [mag] = -24.33

D [kpc] = 42.9

Log M* [M_\odot] = 10.908

SFR [M_\odot/yr] = 0.019