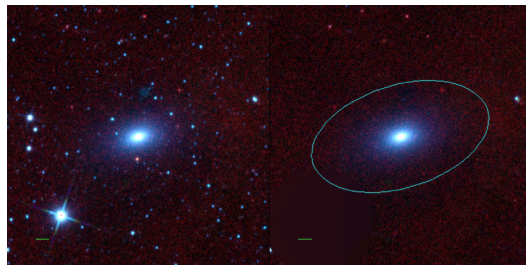
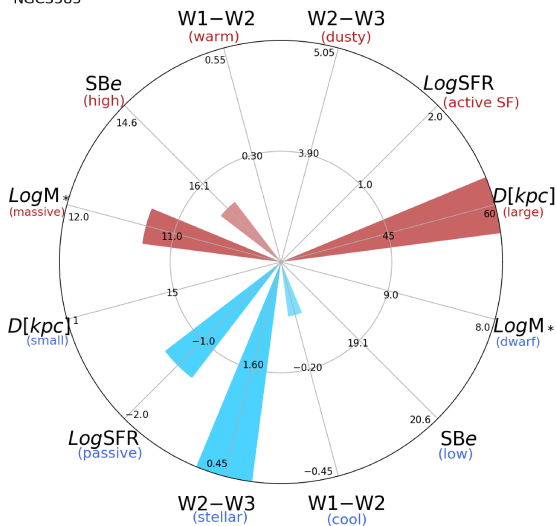


NGC3585



NGC3585



NGC3585 (E)

$\alpha, \delta = 168.3212 -26.7548$

W1 [mJy] = 963.443

W1-W2 [mag] = -0.074

W2-W3 [mag] = 0.250

S_{Beff} [mag/asec²] = 16.574

specz = 0.00421

d [Mpc] = 18.14

Mw1 [mag] = -25.02

D [kpc] = 83.1

Log M* [M_\odot] = 11.263

SFR [M_\odot/yr] = 0.048