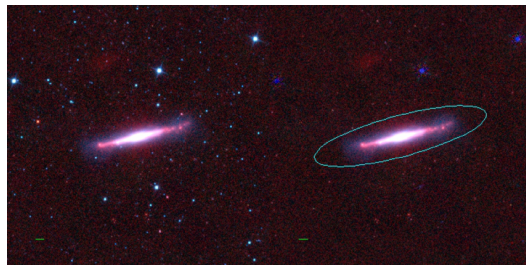
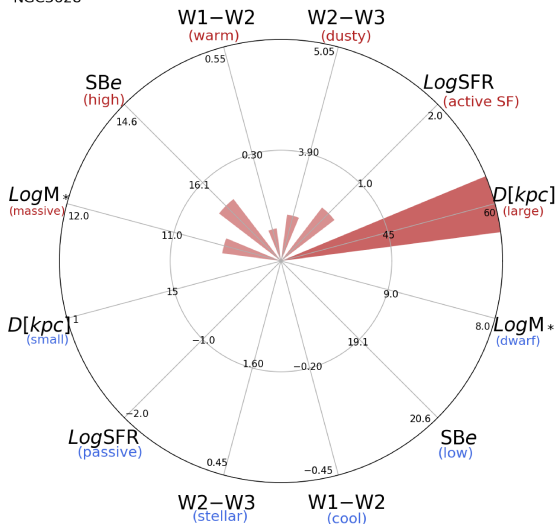


## NGC3628



NGC3628



NGC3628 (SBb)

$\alpha, \delta = 170.0708 \ 13.5891$

W1 [mJy] = 1503.242

W1-W2 [mag] = 0.124

W2-W3 [mag] = 3.236

SB<sub>eff</sub> [mag/asec<sup>2</sup>] = 16.544

specz = 0.00243

d [Mpc] = 10.45

Mw1 [mag] = -24.31

D [kpc] = 61.7

Log M\* [ $M_\odot$ ] = 10.534

SFR [ $M_\odot$ /yr] = 4.05