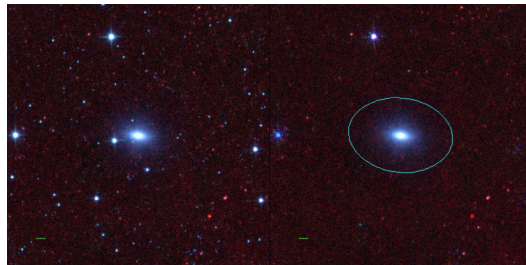
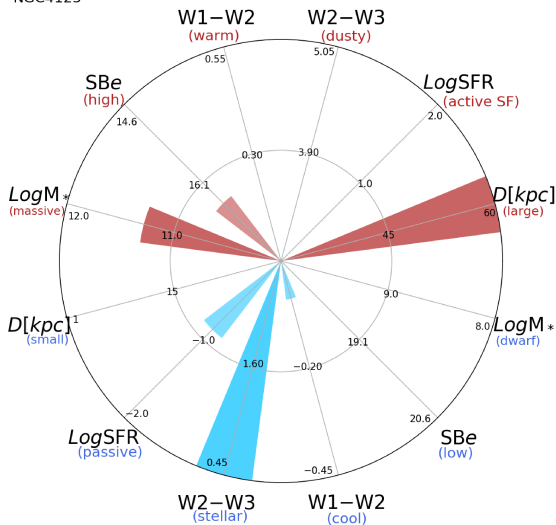


NGC4125



NGC4125



NGC4125 (E)

$\alpha, \delta = 182.0245 \ 65.1744$

W1 [mJy] = 734.512

W1-W2 [mag] = -0.038

W2-W3 [mag] = 0.445

S_{Beff} [mag/asec²] = 16.493

specz = 0.00510

d [Mpc] = 21.99

Mw1 [mag] = -25.15

D [kpc] = 71.0

Log M* [M_\odot] = 11.281

SFR [M_\odot/yr] = 0.133