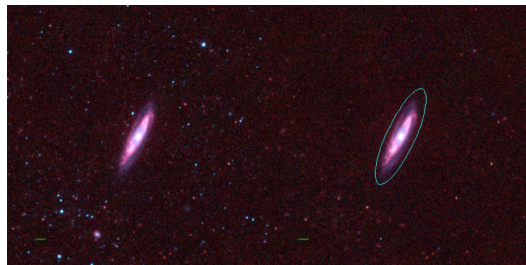
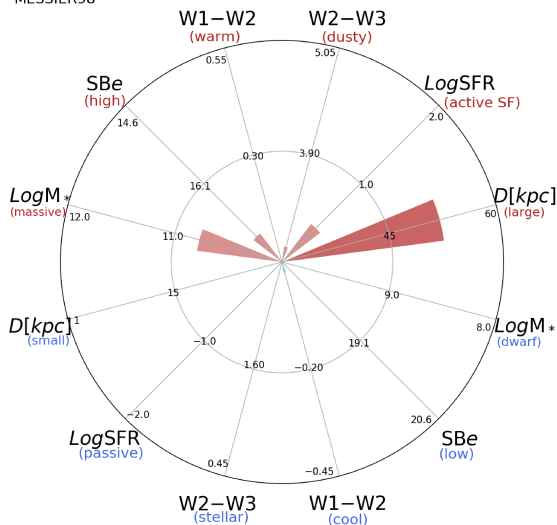


MESSIER98



MESSIER98



NGC4192 (SABb)

$\alpha, \delta = 183.4512 \ 14.9006$

W1 [mJy] = 625.065

W1-W2 [mag] = 0.026

W2-W3 [mag] = 2.910

$S_{B_{eff}}$ [mag/asec²] = 17.114

specz = 0.00371

d [Mpc] = 15.98

Mw1 [mag] = -24.28

D [kpc] = 52.1

Log M* [M_{\odot}] = 10.772

SFR [M_{\odot}/yr] = 2.7