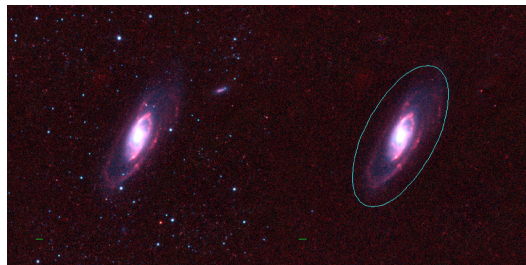
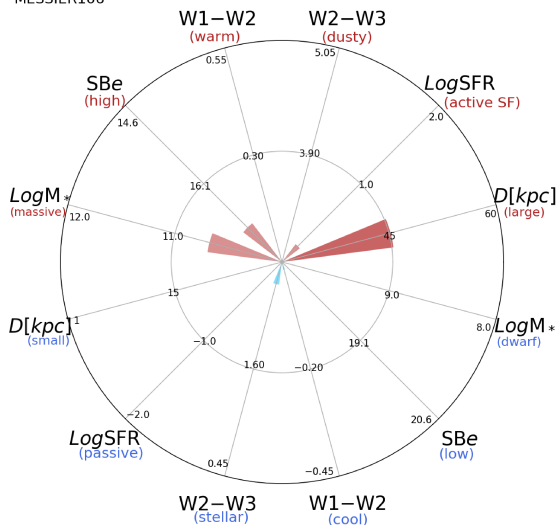


MESSIER106



MESSIER106



NGC4258 (Sbc)

$\alpha, \delta = 184.7395 \ 47.3041$

W1 [mJy] = 2490.171

W1-W2 [mag] = 0.032

W2-W3 [mag] = 2.512

SB_{eff} [mag/asec²] = 16.940

specz = 0.00170

d [Mpc] = 7.31

Mw1 [mag] = -24.08

D [kpc] = 45.2

Log M* [M_{\odot}] = 10.677

SFR [M_{\odot}/yr] = 1.6