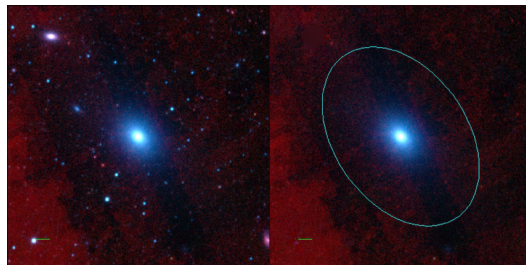
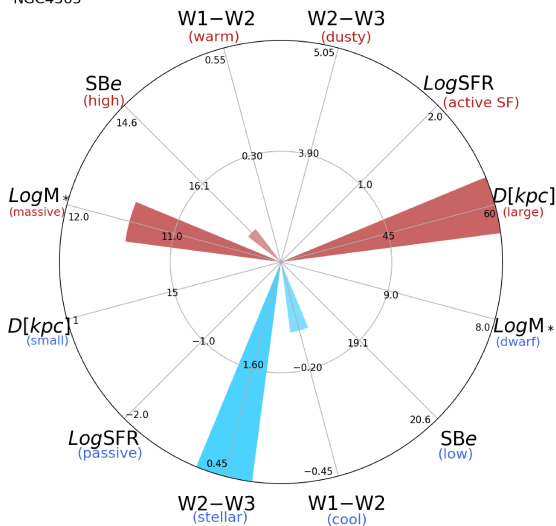


## NGC4365



NGC4365



NGC4365 (E)

$\alpha, \delta = 186.1178 \ 7.3177$

W1 [mJy] = 961.791

W1-W2 [mag] = -0.110

W2-W3 [mag] = -0.371

$S_{\text{Beff}}$  [mag/asec<sup>2</sup>] = 17.038

specz = 0.00503

d [Mpc] = 21.68

Mw1 [mag] = -25.41

D [kpc] = 94.0

Log M\* [ $M_{\odot}$ ] = 11.417

SFR [ $M_{\odot}/\text{yr}$ ] = 0.0002