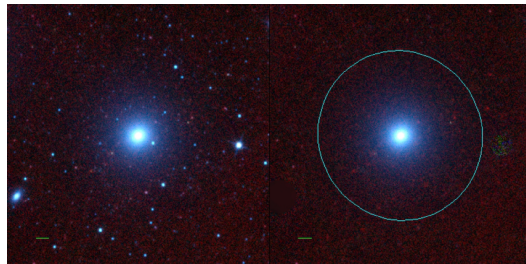
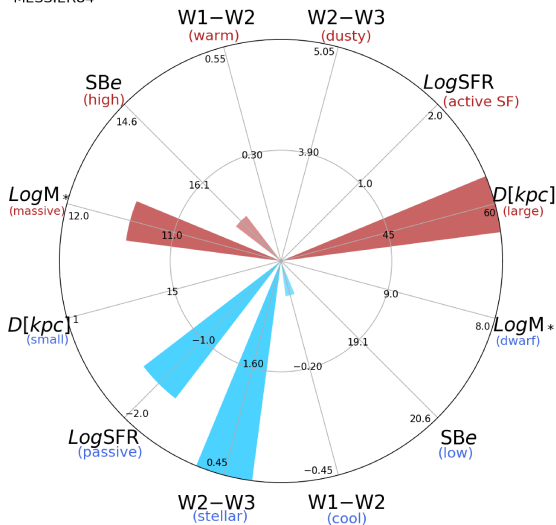


MESSIER84



MESSIER84



NGC4374 (E)

$\alpha, \delta = 186.2655 \ 12.8871$

W1 [mJy] = 1591.227

W1-W2 [mag] = -0.030

W2-W3 [mag] = 0.120

S_{Beff} [mag/asec²] = 16.833

specz = 0.00411

d [Mpc] = 17.70

Mw1 [mag] = -25.52

D [kpc] = 76.2

Log M* [M_\odot] = 11.409

SFR [M_\odot /yr] = 0.027