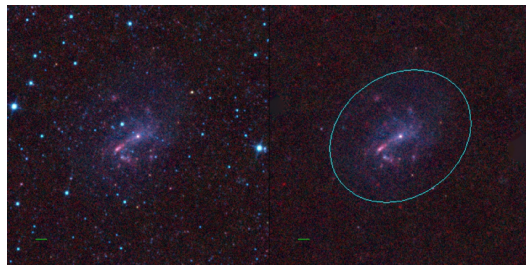
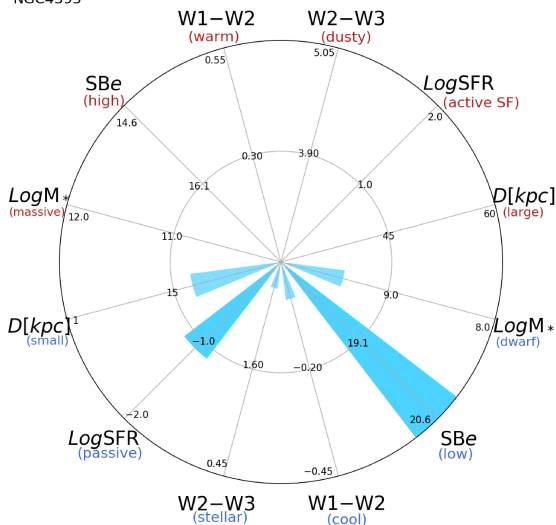


NGC4395



NGC4395



NGC4395 (Sm)

$\alpha, \delta = 186.4536 \ 33.5469$

W1 [mJy] = 242.455

W1-W2 [mag] = -0.036

W2-W3 [mag] = 2.472

S_{Beff} [mag/asec²] = 20.763

specz = 0.00105

d [Mpc] = 4.51

Mw1 [mag] = -20.50

D [kpc] = 17.6

Log M* [M_{\odot}] = 9.421

SFR [M_{\odot}/yr] = 0.079