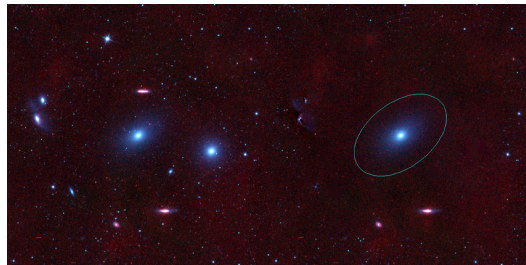
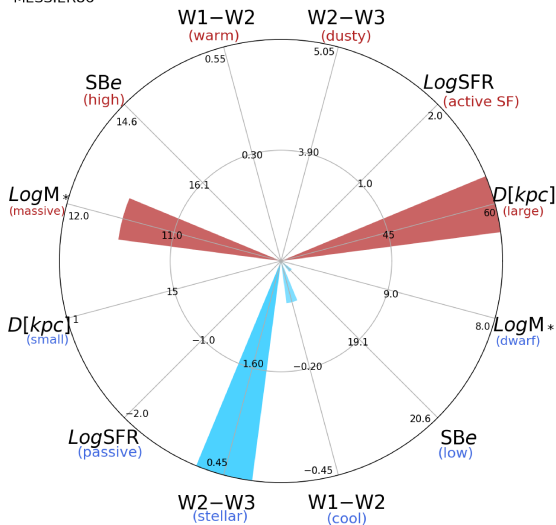


MESSIER86



MESSIER86



NGC4406 (E)

$\alpha, \delta = 186.5490 \ 12.9462$

W1 [mJy] = 2002.436

W1-W2 [mag] = -0.046

W2-W3 [mag] = -0.182

S_{Beff} [mag/asec²] = 17.784

specz = 0.00379

d [Mpc] = 16.32

Mw1 [mag] = -25.59

D [kpc] = 112.0

Log M* [M_{\odot}] = 11.480

SFR [M_{\odot}/yr] = 0.0001