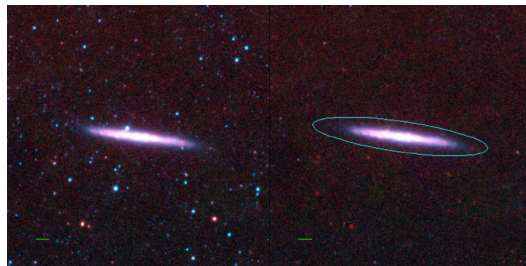
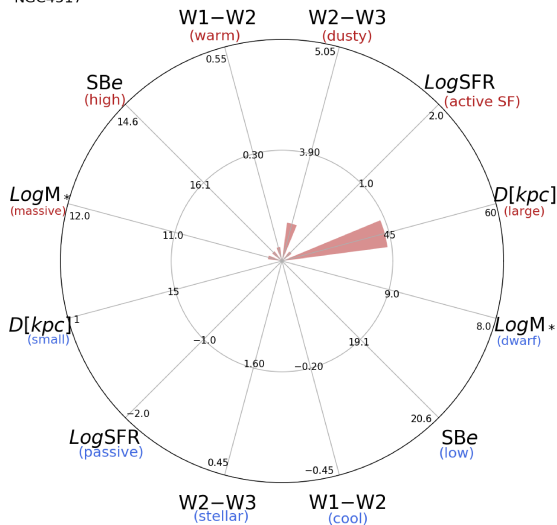


NGC4517



NGC4517



NGC4437 (Sc)

$\alpha, \delta = 188.1897 \ 0.1152$

W1 [mJy] = 444.282

W1-W2 [mag] = 0.082

W2-W3 [mag] = 3.150

S_{Beff} [mag/asec²] = 17.434

specz = 0.00247

d [Mpc] = 10.63

Mw1 [mag] = -23.02

D [kpc] = 44.4

Log M* [M_\odot] = 10.128

SFR [M_\odot /yr] = 1.27