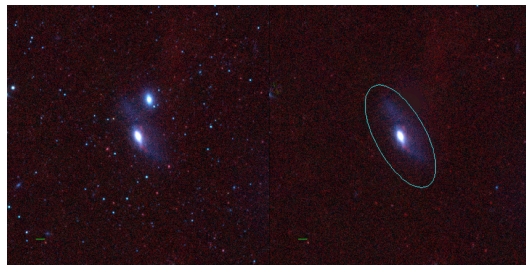
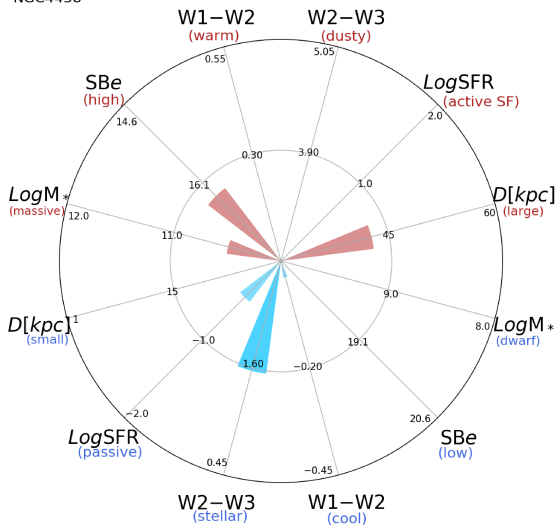


## NGC4438



NGC4438



NGC4438 (Sa)

$\alpha, \delta = 186.9403 \ 13.0089$

W1 [mJy] = 605.536

W1-W2 [mag] = 0.012

W2-W3 [mag] = 1.571

$SB_{eff}$  [mag/asec<sup>2</sup>] = 16.355

specz = 0.00263

d [Mpc] = 11.32

Mw1 [mag] = -23.50

D [kpc] = 42.7

Log M\* [ $M_{\odot}$ ] = 10.494

SFR [ $M_{\odot}/\text{yr}$ ] = 0.344