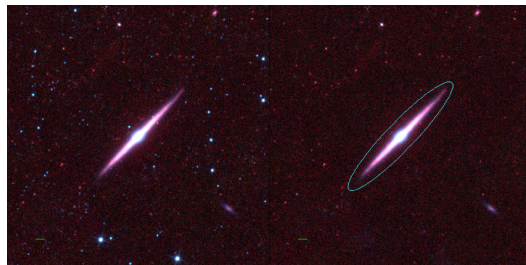
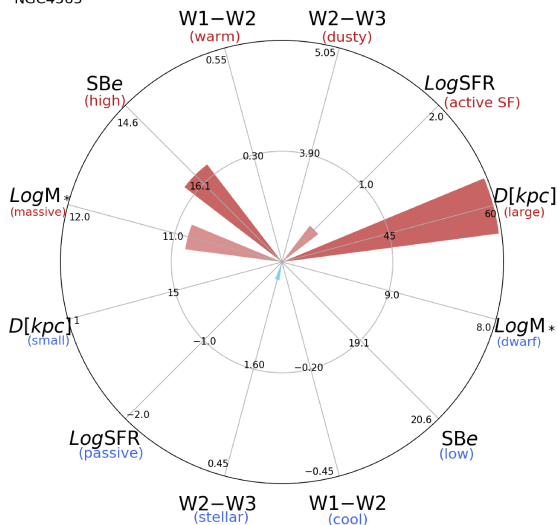


NGC4565



NGC4565



NGC4565 (Sb)

$\alpha, \delta = 189.0866 \ 25.9876$

W1 [mJy] = 1496.491

W1-W2 [mag] = 0.036

W2-W3 [mag] = 2.559

$S_{B_{eff}}$ [mag/asec²] = 15.934

specz = 0.00280

d [Mpc] = 12.05

Mw1 [mag] = -24.61

D [kpc] = 59.6

Log M* [M_{\odot}] = 10.881

SFR [M_{\odot}/yr] = 2.58