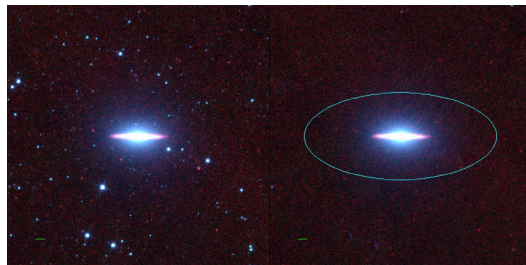
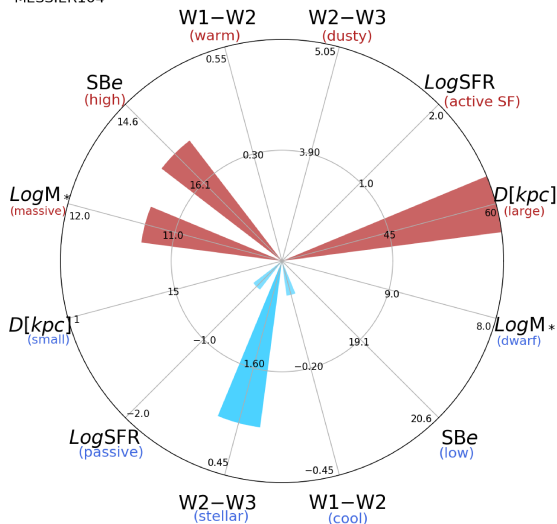


MESSIER104



MESSIER104



NGC4594 (Sa)

$\alpha, \delta = 189.9977 -11.6230$

W1 [mJy] = 4228.897

W1-W2 [mag] = -0.029

W2-W3 [mag] = 1.008

S_{Beff} [mag/asec²] = 15.544

specz = 0.00218

d [Mpc] = 9.38

Mw1 [mag] = -25.20

D [kpc] = 60.0

Log M* [M_{\odot}] = 11.279

SFR [M_{\odot}/yr] = 0.471