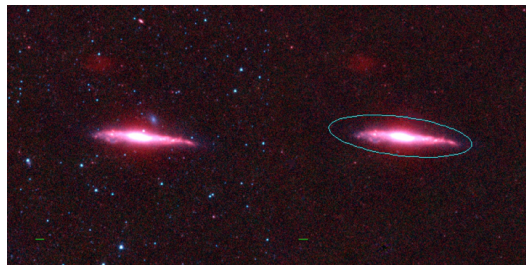
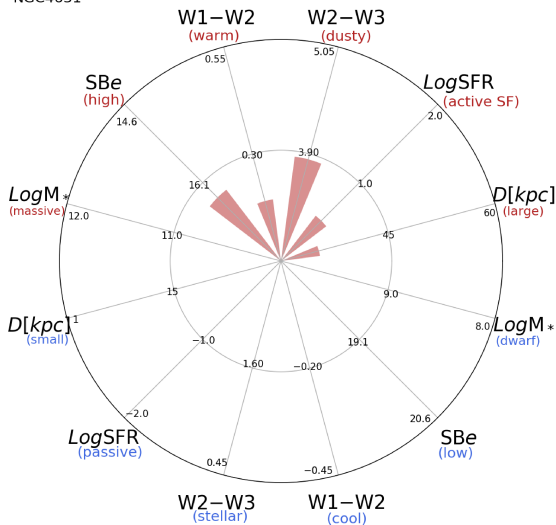


NGC4631



NGC4631



NGC4631 (SBcd)

$\alpha, \delta = 190.5333 \ 32.5417$

W1 [mJy] = 1232.015

W1-W2 [mag] = 0.190

W2-W3 [mag] = 3.843

SB_{eff} [mag/asec²] = 16.385

specz = 0.00171

d [Mpc] = 7.35

Mw1 [mag] = -23.33

D [kpc] = 35.3

Log M* [M_\odot] = 9.976

SFR [M_\odot/yr] = 3.26