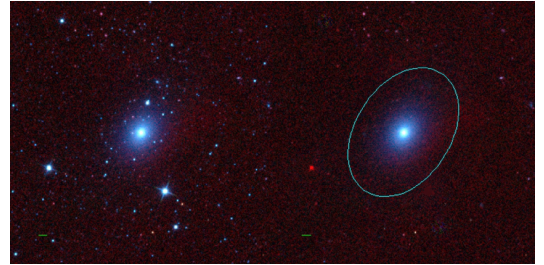
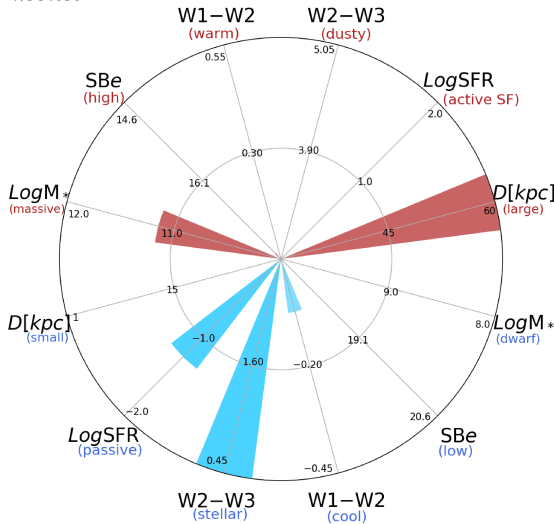


NGC4636



NGC4636



NGC4636 (E)

$\alpha, \delta = 190.7077 \ 2.6878$

W1 [mJy] = 1096.431

W1-W2 [mag] = -0.073

W2-W3 [mag] = 0.333

S_{Beff} [mag/asec²] = 17.495

specz = 0.00345

d [Mpc] = 14.85

Mw1 [mag] = -24.73

D [kpc] = 69.1

Log M* [M_\odot] = 11.146

SFR [M_\odot /yr] = 0.057