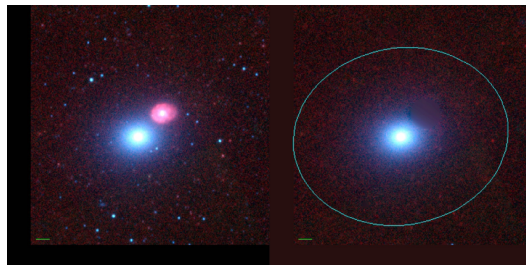
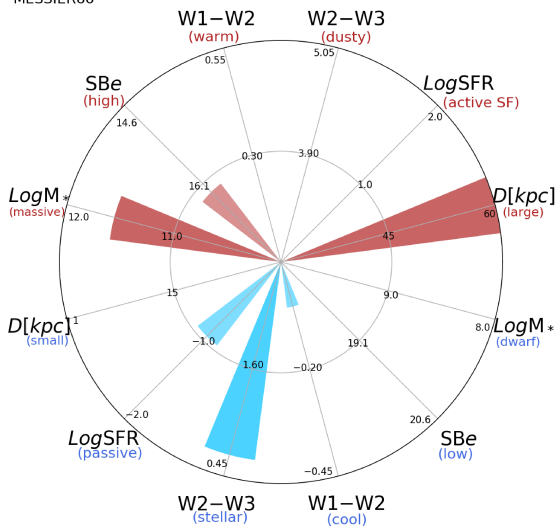


MESSIER60



MESSIER60



NGC4649 (E)

$\alpha, \delta = 190.9164 \ 11.5527$

W1 [mJy] = 2067.398

W1-W2 [mag] = -0.054

W2-W3 [mag] = 0.678

SB_{eff} [mag/asec²] = 16.262

specz = 0.00403

d [Mpc] = 17.36

Mw1 [mag] = -25.76

D [kpc] = 82.4

Log M* [M_\odot] = 11.557

SFR [M_\odot/yr] = 0.113