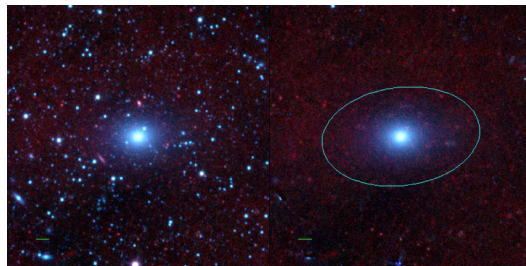
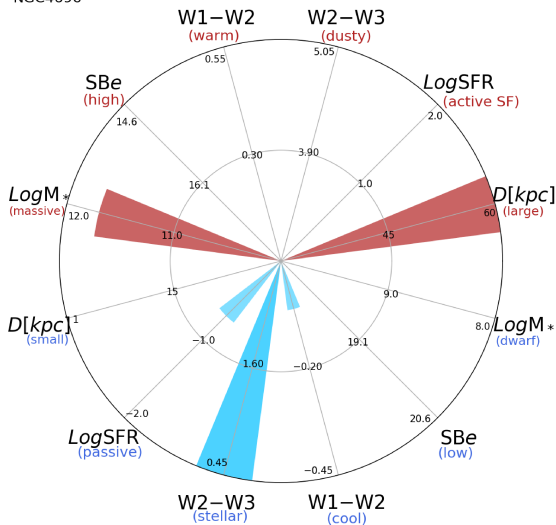


## NGC4696



NGC4696



NGC4696 (E)

$\alpha, \delta = 192.2052 -41.3109$

W1 [mJy] = 639.779

W1-W2 [mag] = -0.062

W2-W3 [mag] = 0.364

$S_{\text{Beff}}$  [mag/asec<sup>2</sup>] = 17.616

specz = 0.00852

d [Mpc] = 36.83

Mw1 [mag] = -26.12

D [kpc] = 127.8

Log M\* [ $M_{\odot}$ ] = 11.700

SFR [ $M_{\odot}/\text{yr}$ ] = 0.2