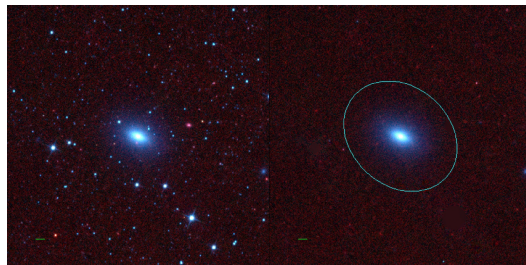
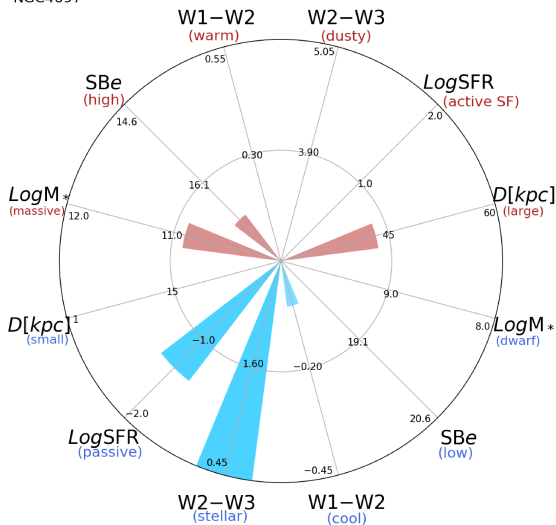


NGC4697



NGC4697



NGC4697 (E)

$\alpha, \delta = 192.1496 -5.8006$

W1 [mJy] = 1239.689

W1-W2 [mag] = -0.054

W2-W3 [mag] = 0.219

SB_{eff} [mag/asec²] = 16.808

specz = 0.00244

d [Mpc] = 10.50

Mw1 [mag] = -24.11

D [kpc] = 43.3

Log M* [M_{\odot}] = 10.898

SFR [M_{\odot}/yr] = 0.043