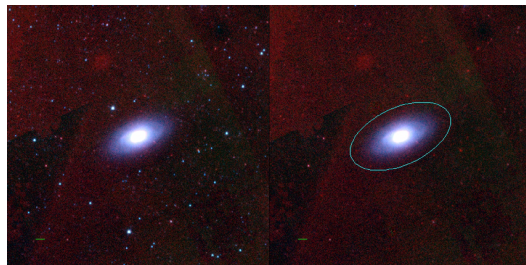
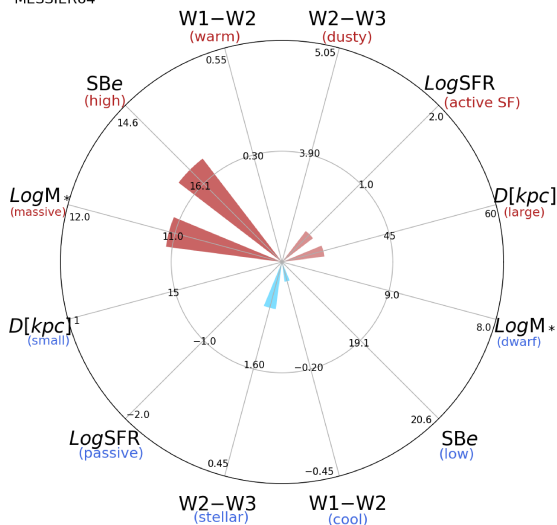


MESSIER64



MESSIER64



NGC4826 (SABa)

$\alpha, \delta = 194.1819 \ 21.6830$

W1 [mJy] = 2690.537

W1-W2 [mag] = 0.005

W2-W3 [mag] = 2.258

S_{Beff} [mag/asec²] = 15.837

specz = 0.00233

d [Mpc] = 10.02

Mw1 [mag] = -24.85

D [kpc] = 35.8

Log M* [M_{\odot}] = 11.055

SFR [M_{\odot}/yr] = 2.25