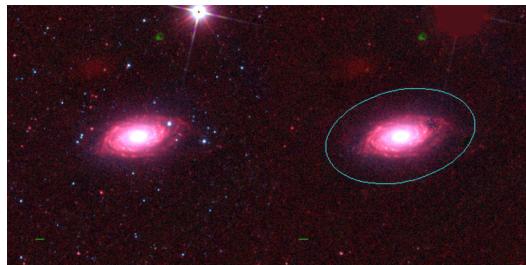
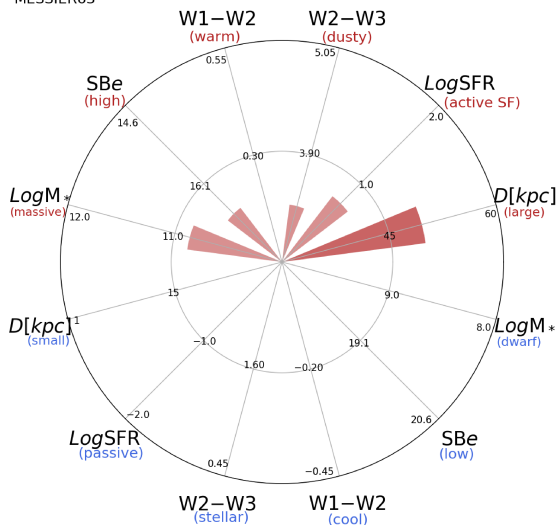


MESSIER63



MESSIER63



NGC5055 (Sbc)

$\alpha, \delta = 198.9555 \ 42.0293$

W1 [mJy] = 2367.261

W1-W2 [mag] = 0.052

W2-W3 [mag] = 3.350

S_{Beff} [mag/asec²] = 16.676

specz = 0.00228

d [Mpc] = 9.81

Mw1 [mag] = -24.67

D [kpc] = 49.6

Log M* [M_\odot] = 10.861

SFR [M_\odot /yr] = 5.6