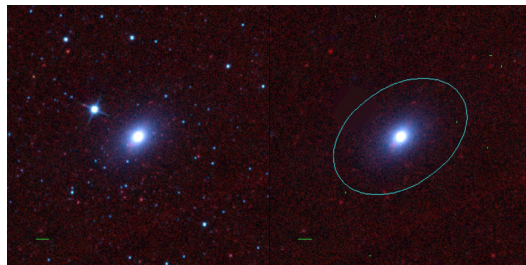
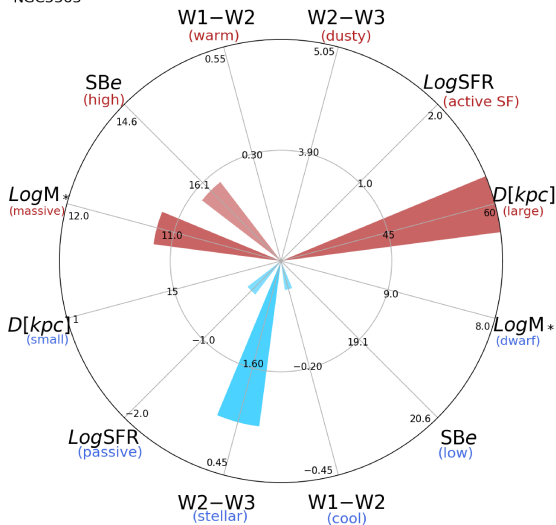


NGC5363



NGC5363



NGC5363 (S0-a)

$\alpha, \delta = 209.0301 \ 5.2549$

W1 [mJy] = 737.157

W1-W2 [mag] = -0.016

W2-W3 [mag] = 1.017

S_{Beff} [mag/asec²] = 16.252

specz = 0.00471

d [Mpc] = 20.30

Mw1 [mag] = -24.98

D [kpc] = 65.5

Log M* [M_\odot] = 11.159

SFR [M_\odot /yr] = 0.416