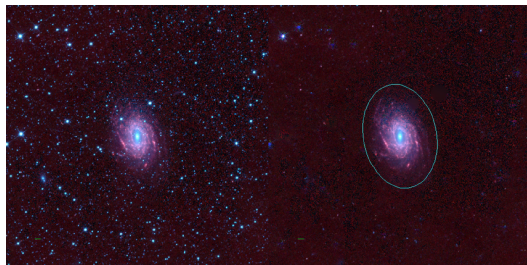
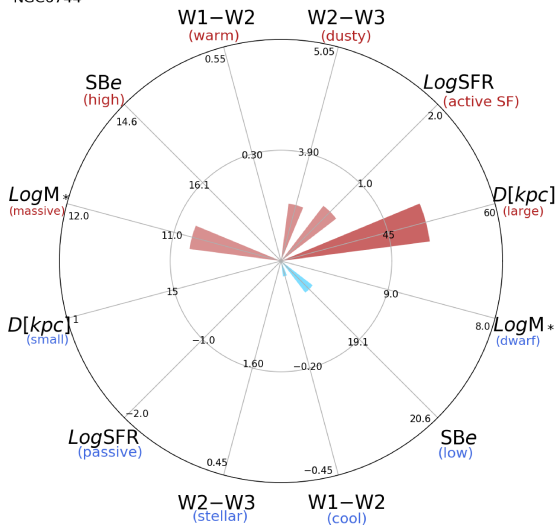


NGC6744



NGC6744



NGC6744 (Sbc)

$\alpha, \delta = 287.4421 -63.8575$

W1 [mJy] = 1902.730

W1-W2 [mag] = 0.015

W2-W3 [mag] = 3.351

SB_{eff} [mag/asec²] = 18.140

specz = 0.00221

d [Mpc] = 9.51

Mw1 [mag] = -24.36

D [kpc] = 50.3

Log M* [M_\odot] = 10.831

SFR [M_\odot/yr] = 4.24