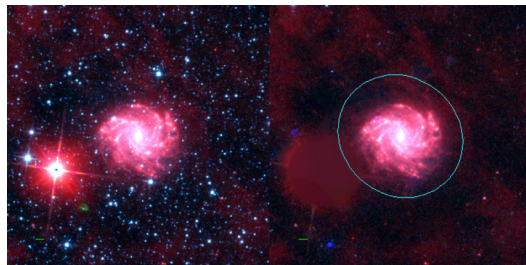
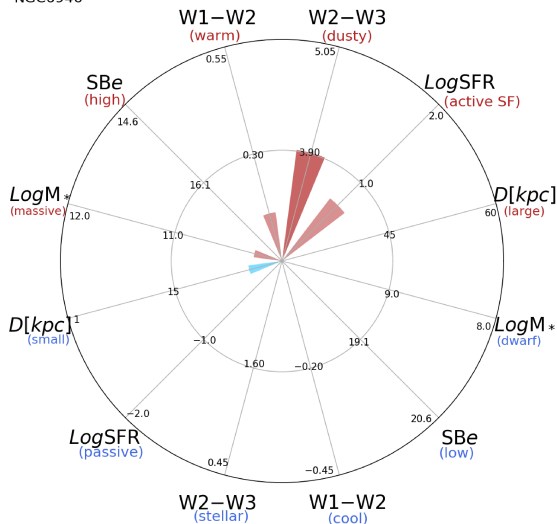


## NGC6946



NGC6946



NGC6946 (SABc)

$\alpha, \delta = 308.7180 \ 60.1539$

W1 [mJy] = 3103.823

W1-W2 [mag] = 0.161

W2-W3 [mag] = 3.912

$S_{Beff}$  [mag/asec<sup>2</sup>] = 17.576

specz = 0.00137

d [Mpc] = 5.89

Mw1 [mag] = -23.85

D [kpc] = 25.4

Log M\* [ $M_\odot$ ] = 10.259

SFR [ $M_\odot/\text{yr}$ ] = 5.14