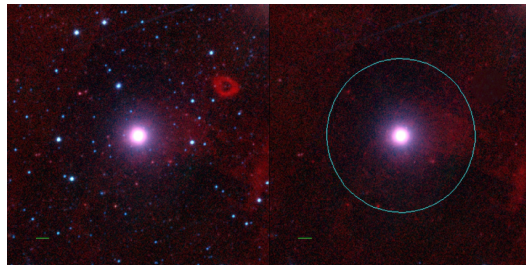
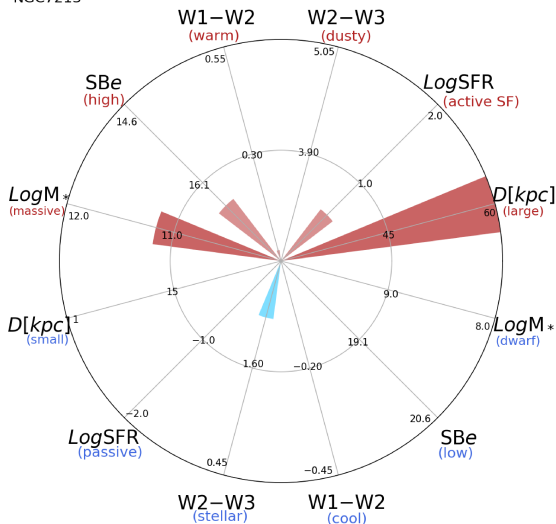


NGC7213



NGC7213



NGC7213 (Sa)

$\alpha, \delta = 332.3174 -47.1668$

W1 [mJy] = 744.011

W1-W2 [mag] = 0.075

W2-W3 [mag] = 2.143

S_{Beff} [mag/asec²] = 16.542

specz = 0.00618

d [Mpc] = 26.66

Mw1 [mag] = -25.58

D [kpc] = 89.4

Log M* [M_{\odot}] = 11.169

SFR [M_{\odot}/yr] = 3.87