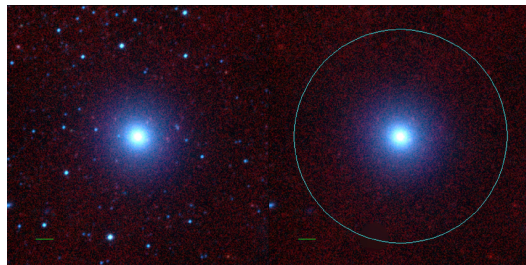
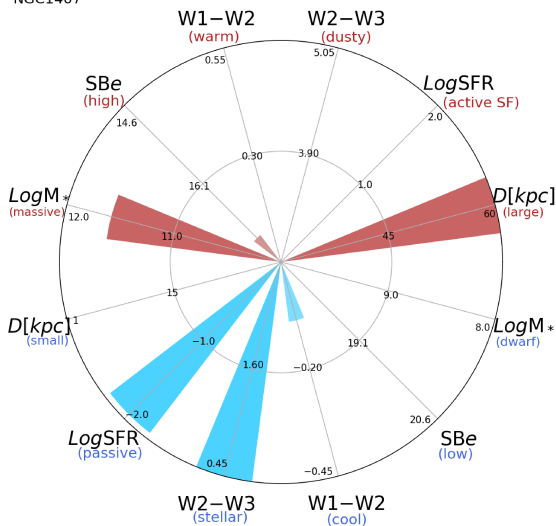


## NGC1407



NGC1407



NGC\_1407 (E)

$\alpha, \delta = 55.0492 -18.5800$

W1 [mJy] = 1031.140

W1-W2 [mag] = -0.086

W2-W3 [mag] = 0.339

$S_{\text{Beff}}$  [mag/asec<sup>2</sup>] = 17.142

specz = 0.00589

d [Mpc] = 25.41

Mw1 [mag] = -25.83

D [kpc] = 96.9

Log M\* [ $M_\odot$ ] = 11.585

SFR [ $M_\odot/\text{yr}$ ] = 0.011