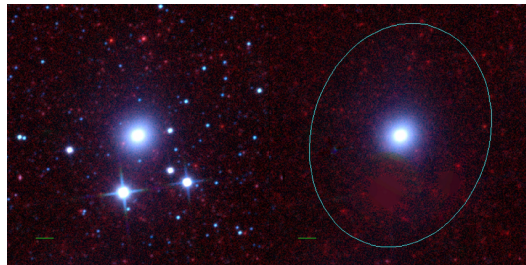
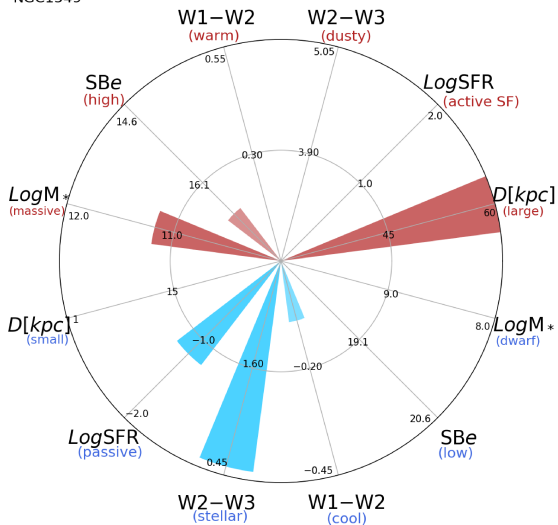


NGC1549



NGC1549



NGC_1549 (E)

$\alpha, \delta = 63.9381 - 55.5924$

W1 [mJy] = 841.736

W1-W2 [mag] = -0.089

W2-W3 [mag] = 0.543

SB_{eff} [mag/asec²] = 16.697

specz = 0.00410

d [Mpc] = 17.66

Mw1 [mag] = -24.82

D [kpc] = 65.5

Log M* [M_\odot] = 11.181

SFR [M_\odot /yr] = 0.065