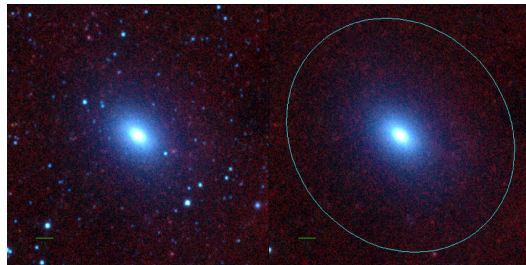
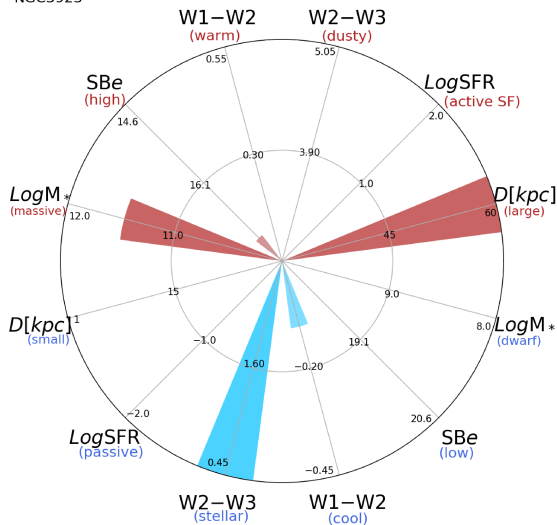


NGC3923



NGC3923



NGC_3923 (E)

$\alpha, \delta = 177.7570 -28.8061$

W1 [mJy] = 1276.131

W1-W2 [mag] = -0.103

W2-W3 [mag] = 0.146

SBe_{eff} [mag/asec²] = 17.159

specz = 0.00466

d [Mpc] = 20.08

Mw1 [mag] = -25.55

D [kpc] = 88.6

Log M* [M_\odot] = 11.474

SFR [M_\odot/yr] = 0.0002