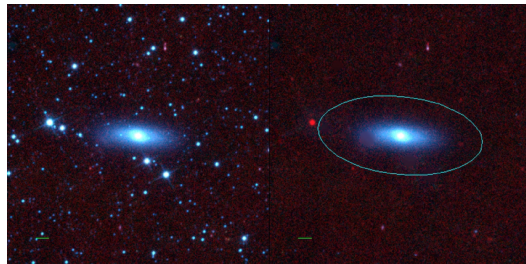
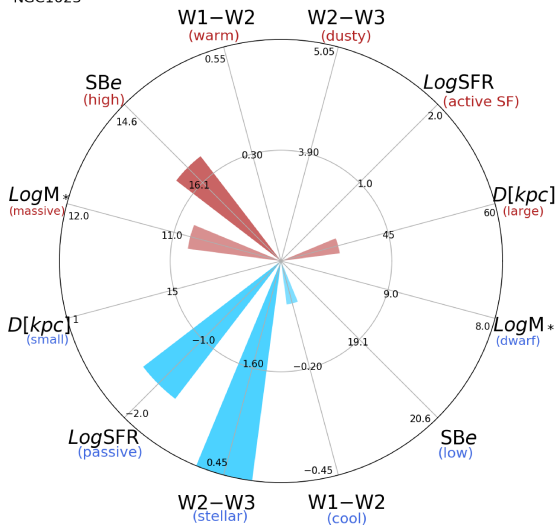


NGC1023



NGC1023



UGC2154 (E-S0)

$\alpha, \delta = 40.1002 \ 39.0634$

W1 [mJy] = 1128.612

W1-W2 [mag] = -0.049

W2-W3 [mag] = 0.369

SB_{eff} [mag/asec²] = 15.811

specz = 0.00242

d [Mpc] = 10.41

Mw1 [mag] = -23.99

D [kpc] = 38.0

Log M* [M_{\odot}] = 10.847

SFR [M_{\odot}/yr] = 0.027