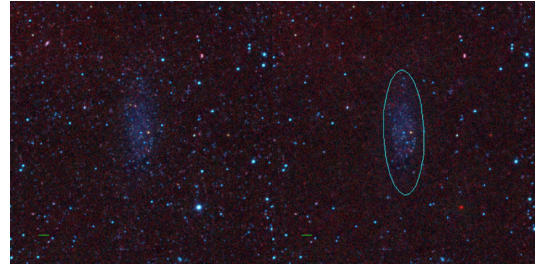
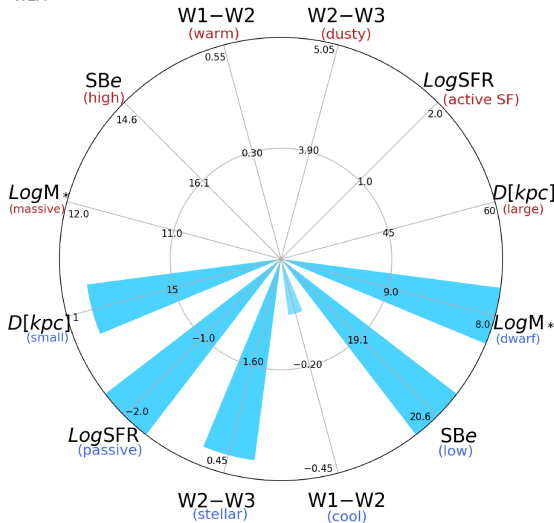


WLM



WLM



WLM (IB)

$\alpha, \delta = 0.4923 -15.4610$

W1 [mJy] = 84.130

W1-W2 [mag] = -0.077

W2-W3 [mag] = 0.644

SB_{eff} [mag/asec²] = 21.081

specz = 0.00022

d [Mpc] = 0.94

Mw1 [mag] = -15.96

D [kpc] = 3.5

Log M* [M_{\odot}] = 7.636

SFR [M_{\odot}/yr] = 0.0006